

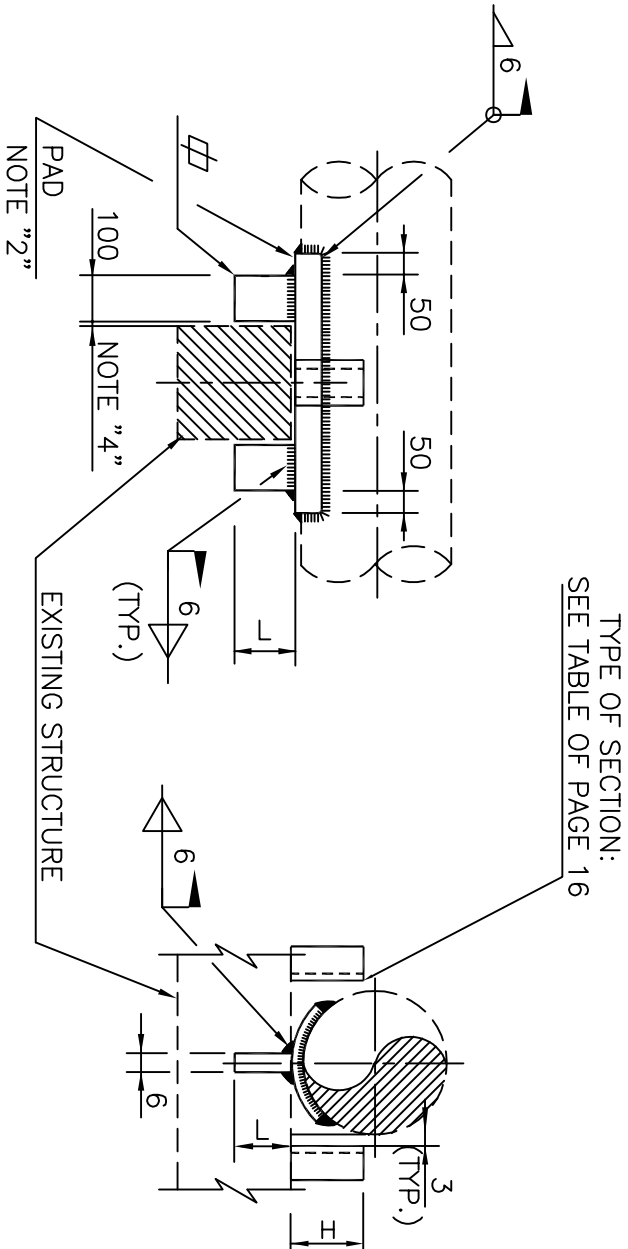
- 1-FOR GENERAL NOTES SEE SHEET No. 4.
- 2-MATERIAL OF PAD SHALL BE SAME AS PIPE MATERIAL, IT ALSO CAN BE MADE OF PIPE SEGMENT INSTEAD OF PLATE.
- 3-PLATE MATERIAL SHALL BE :ASTM-A283 GR.C
- 4-THE GAP BETWEEN GUIDE & STOP AND STRUCTURE SHALL BE DETERMINED BY STRESS ANALYST.

SC-04-(1)-(2)-(3)-(4)

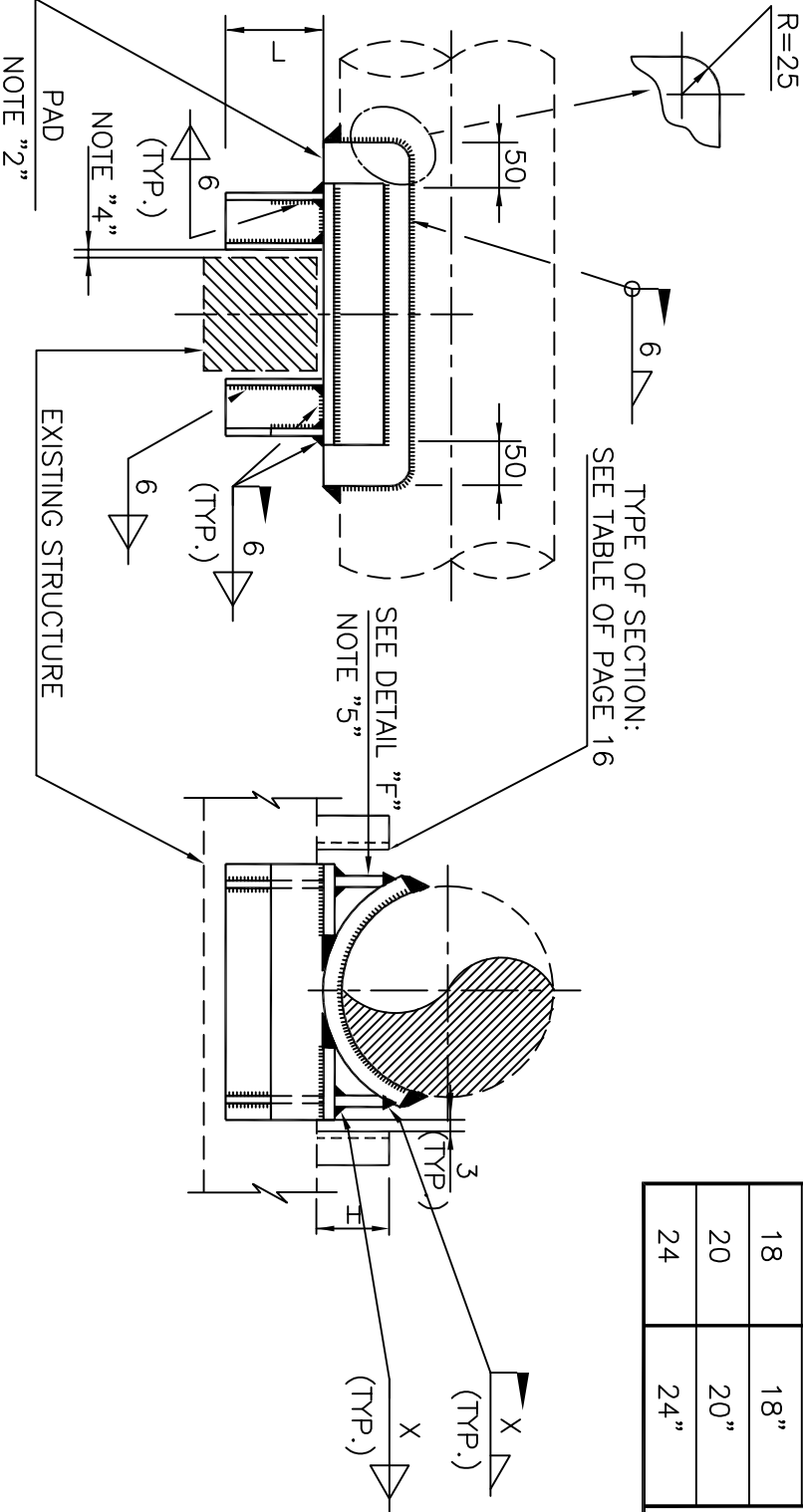
- 1- NPS MARK
- 2- STOPPER LENGTH MARK
- 3- GUIDE GAP(mm)
- 4- STOPPER GAP(mm)

LOAD TABLE

NPS MARK	RUN PIPE SIZE	GUIDE	ALLOWABLE LOAD FA (KG)
0A	1/2"	PLATE THK 6	65
0B	3/4"		
01	1"		
1A	1 1/2"		
02	2"		
2A	2 1/2"	HEB 120	6500
03	3"		
04	4"		
06	6"		
08	8"		
10	10"	HEB 140	9100
12	12"		
14	14"		
16	16"		
18	18"		
20	20"		
24	24"		



1/2"(DN15)~6"(DN 150)



STOPPER MARK	
MARK	L
1	50
2	100
3	700
4	150
07	200

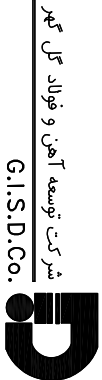
4"(DN100)~24"(DN600)

INTERNAL PROCEDURE

DRAWING TITLE:

STANDARD FOR PIPE SUPPORT DRAWING

Contract No.	Document No.	Class	Rev.	Size	Scale	Sheet No.



GISDCo.

شرکت توسعه آهن و فولاد گل گهر  
G.I.S.D.Co.